



STARHOTELS®
PREMIUM

Ritz
MILANO



*In the lively heart of
Milan*

Standing in a quiet street just behind the glittering shops and theatres of Corso Buenos Aires, the Ritz is the definition of Milanese cool. Recently refurbished, this boutique hotel perfectly captures the spirit of Milano: bold, contemporary features and opulent fabrics and furnishings, along with panoramic photographs in each room. To relax, there's a peaceful wellness area with fitness room, Turkish bath and sauna – an indulgent space to unwind after a thrilling day in the city.



Location

A few steps from Corso Buenos Aires, the historical city centre and the famous shopping areas

Distances

Railway station:

air terminal Km 1

Railway link:

Metro stop P.ta Venezia

Highway: Km 4

Underground:

MM1 Lima / MM1 P.ta Venezia - MM2 - MM3 Stazione Centrale

Airport:

Linate Km 10 - Malpensa Km 50

Fairgrounds:

Milano (City) Km 5 - Milano (Rho) Km 10

Via Spallanzani, 40 - 20129 Milano - ITALY

T +39 02 20551 F +39 02 29518679

ritz.mi@starhotels.it

starhotels.com

Restaurant & Bar

The Bruschetteria Grill&BBQ by Eataly restaurant and bar at the Ritz are a smart, stylish choice for dining in Milan with traditional Italian food and international dishes all complemented by a good wine list and a warm, welcoming atmosphere.

The restaurant, with a large dehors which is very enjoyable on warm sunny days, can host events on a suitably grand scale, with banquets and drinks receptions for up to 150 people.





197 Rooms

28 Classic
96 Superior
50 Deluxe
17 Junior Suite
6 Suite

Our 197 rooms and suites, recently renovated in an elegant, contemporary style, are thoughtfully designed with comfort in mind – some offer stunning views across Milano.





Meetings & Events

Meeting rooms: 7

Capacity (theatre style): 170 max

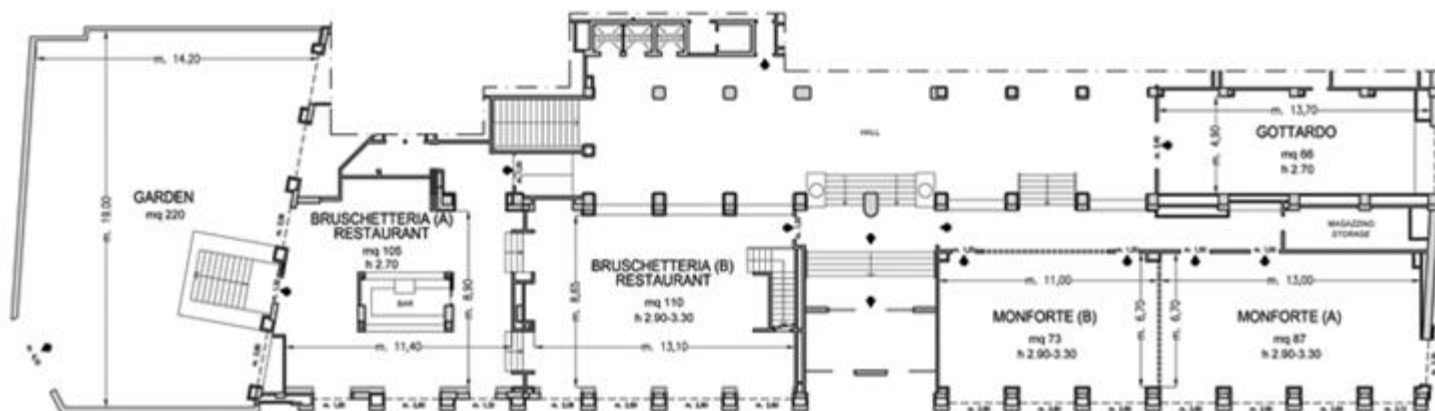
The Ritz hotel adds a touch of glamour to any conference and business meeting in Milan.

Seven modern meeting rooms for up to 170 people and an experienced Event Manager will help you deliver an outstanding event.

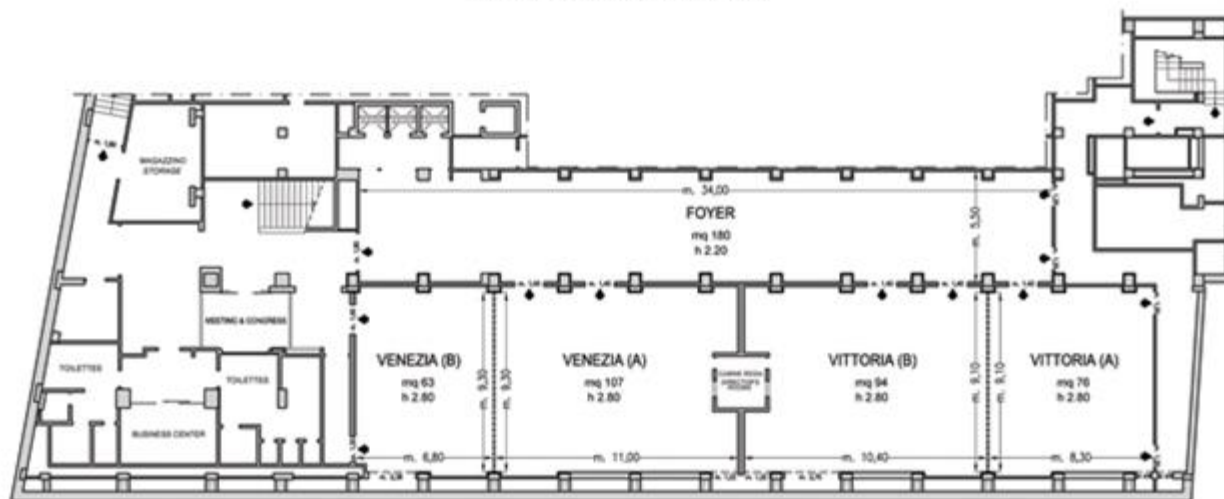


Ritz

MILANO



Piano Terra / Ground Floor



Piano -1 / Basement

◆ Uscite di sicurezza / Emergency /

--- Finestre / Windows

..... Pareti mobili / Modular Walls

□ Colonne / Columns

Ritz

MILANO

Meeting rooms	Area mq / ft.	L x W mt. / ft.	Height mt. / ft.	Theatre	Class room	Conference table/ U-shape	Cabaret style^	Cocktail reception	Banquet
Venezia (A)	107 1151,32	11,00x9,30 36,09x30,51	2,8 9,19	80	50	34	50	100	60
Venezia (B)	63 677,88	6,80x9,30 22,31x30,51	2,8 9,19	40	30	18	16	40	40
Venezia (A+B)	170 1829,2	17,90x9,30 58,73x30,51	2,8 9,19	170	80	50	66	160	100
Vittoria (A)	76 817,76	8,30x9,10 27,23x29,86	2,8 9,19	50	30	28	16	50	50
Vittoria (B)	94 1011,44	10,40x9,10 34,12x29,86	2,8 9,19	80	50	34	50	100	60
Vittoria (A+B)	170 1829,2	20,50x9,10 67,26x29,86	2,8 9,19	170	80	60	66	150	100
Gottardo	66 710,44	13,70x4,90 44,95x16,08	2,7 8,85	50	30	20	15	50	30
Monforte (A)°	87 936,5	13,00x6,70 44,95x22,00	2,90-3,30 9,51-10,82	75	50	30	32	90	60
Monforte (B)°	73 785,8	11,00x6,70 36,10x22,00	2,90-3,30 9,51-10,82	60	40	22	32	70	40
Monforte (A+B)°	160 1722,28	24,20x6,70 79,40x22,00	2,90-3,30 9,51-10,82	160	80	55	64	160	100
N° 4 Studio Junior Suite	28 301,39	6x4 19,67x13,12	2,95 9,67	-	-	12	-	-	-
Foyer	180 1937,5	34x5,50 111,5x18,05	2,2 7,2						
Bruschetteria Grill&BBQ by Eataly Restaurant (A)	105 1130,24	11,40x8,90 37,40x29,20	2,7 8,85	-	-	-	-	-	26
Bruschetteria Grill&BBQ by Eataly Restaurant (B)	110 1184,06	13,10x8,65 42,98x28,38	2,90-3,30 9,51-10,82	-	-	-	-	-	80
Bruschetteria Grill&BBQ by Eataly Restaurant (A+B)	215 2314,3	24,50x8,90 80,38x29,20	2,7 8,85	-	-	-	-	150	106
Garden / reception and restaurant area	220 2368,13	19x14,20 62,31x46,57	-	-	-	-	-	50	-

° Daylight

^ Cabaret style: Diameter tables cm 180, up to 8 pax each